

Anti-ERK1/2

Catalog No. | Description

IREBT13 | Anti-ERK1/2 (E31R) Signal Transduction Monoclonal Antibody

Clonality | Host Species | Isotype

E31R | Mouse | IgG1

Immunogen

Full length recombinant human ERK1 protein

Specificity

Recognizes human ERK1 and ERK2 proteins

Cross Reactivity

WB: ERK1 and ERK2 from human cells. ERK1 and ERK2 from other species may also be detectable

Purification

Protein A affinity chromatography from mouse ascites fluid

Applications

WB

Form

1mg/mL in 10mM PBS, pH 7.2, with 0.05% NaN₃

Working Conditions

WB (with ECL): 1:1000 dilution (incubate for one hour at room temperature)

For best results with other assays, please determine optimal working dilution by titration test

Storage

Store at -20°C for up to 2 years. Centrifuge after first thaw to maximize product recovery. Aliquot to avoid repeated freeze-thaw cycles. Store aliquots at 4°C for 1-2 weeks

Images

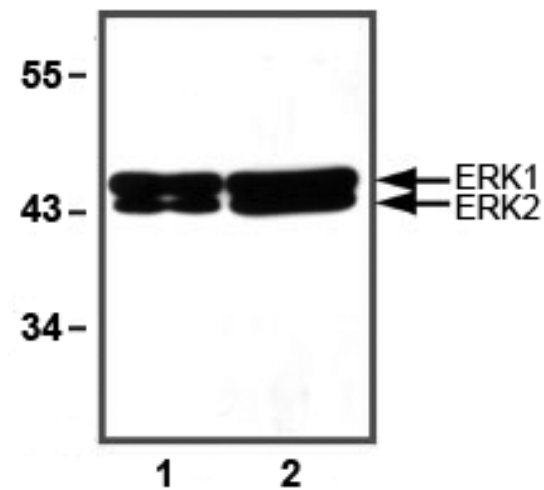


Fig. 1:1000 (1µg/mL) Ab dilution used in WB of 10µg (1) and 30µg (2) HeLa cell lysates

For *in vitro* research use only