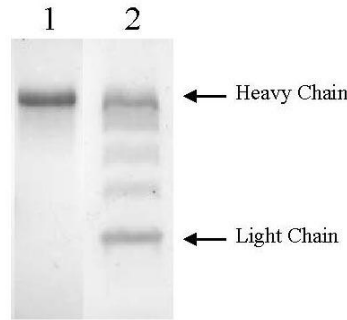


Innovative Research, Inc.

46430 Pear Court
Novi, MI 48377
TEL: (248) 896.145
FAX: (248) 896.0149
Web Site: <http://www.innov-research.com>

Certificate of Analysis



Rabbit Plasmin - 10 % SDS PAGE
1 Plasmin (Non Reduced)
2 Plasmin (Reduced)

Product: Rabbit Plasmin– RbPLM

Date: 17 December, 2002

Lot: RbPLM

Molecular Weight: 85,000 by SDS PAGE

Physical Specifications:

Physical Appearance: colorless frozen solution

Spectrophotometric Data:

Ultraviolet: Absorbance (280nm) = 0.48 $\epsilon^{0.1\%} = 1.69$
Concentration = 0.28 mg/mL

Considerations:

Storage Conditions: Store frozen at -70°C – stability > 1yr
Buffer Composition: 0.1M HEPES; 0.1M NaCl; pH 7.4

Other: Plasmin will undergo rapid autoproteolysis in the absence of Protease inhibitors such as benzamidine, and should be used quickly after thawing before significant activity losses occur.