

Innovative Research, Inc.

46430 Pear Court

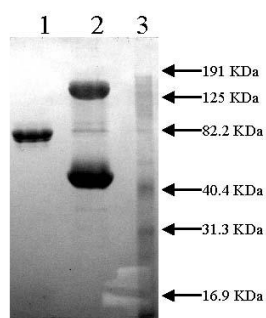
Novi, Mi 48377

TEL: (248) 896.145

FAX: (248) 896.0149

Web Site: <http://www.innov-research.com>

Certificate of Analysis

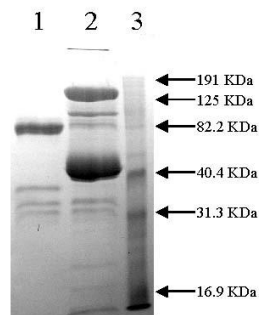


10% SDS-PAGE - GelCode Blue Stain

1 MTPA-605 (5 ug) Non-reduced

2 MTPA-605 (5 ug) + PAI-1 (15 ug) Non-reduced

3 Prestained Standard



10% SDS-PAGE - GelCode Blue Stain

1 MTPA-605 (5 ug) Reduced

2 MTPA-605 (5 ug) + PAI-1 (15 ug) Reduced

3 Prestained Standard

Product: Active Mouse tPA – MTPA

Date: June, 2005

Lot: MTPA

Molecular Weight: 70,000 by SDS PAGE

Physical Specifications:

Physical Appearance: colorless frozen solution

Solubility: > 2 mg/mL

Spectrophotometric Data:

Ultraviolet: Absorbance (280nm) = 7.92 $\epsilon^{0.1\%} = 1.8$

Concentration = 4.4 mg/mL

Considerations:

Storage Conditions: Store frozen at -70°C – stability > 1yr

Buffer Composition: 0.4 M HEPES; 0.1 M NaCl; pH 7.4

Other: > 98% pure by SDS PAGE.

> 90% single chain.

Fully complexable with human PAI-1.