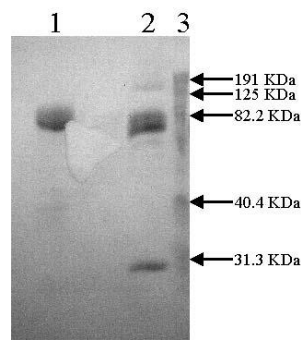


Innovative Research, Inc.

46430 Peary Court
Novi, Mi 48377
TEL: (248) 896.0145
FAX: (248) 896.0149
Web Site: <http://www.innov-research.com>

Certificate of Analysis



10% SDS-PAGE - GelCode Blue Stain

1 HPLM-505 (5 ug) Non-reduced
2 HPLM-505 (5 ug) Reduced
3 Prestained Standard

Product: Human Lys Plasmin – HPLM

Date: 26 May, 2005

Lot: HPLM

Molecular Weight: 83,000 by SDS PAGE

Physical Specifications:

Physical Appearance: colorless frozen solution

Solubility: > 2 mg/mL and < 5 mg/mL

Spectrophotometric Data:

Ultraviolet: Absorbance (280nm) = 5.54 $\epsilon^{0.1\%}$ = 1.69
Active Concentration = 3.28 mg/mL

Activity:

100% by definition (eluted from SBTI)

Considerations:

Storage Conditions: Store frozen at -70°C – stability > 1yr

Buffer Composition: 0.1 M HEPES; 0.1 M NaCl; pH 7.4

Other: The sample was eluted from SBTI agarose with 0.5 M benzamidine.

The sample is by definition 100% active because only functionally active plasmin can be bound to SBTI agarose. Benzamidine was removed by gel filtration using G-25 and the sample was flash-frozen immediately. The plasmin will undergo rapid auto proteolysis in the absence of benzamidine and should be used quickly once thawed. Aliquot to avoid freeze-thaw cycles.