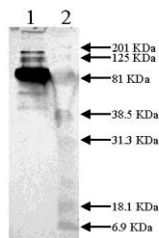


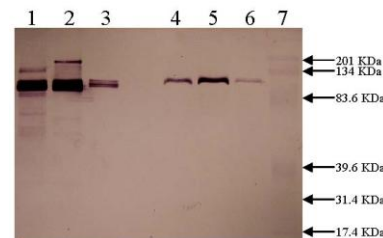
## Innovative Research, Inc.

46430 Peary Court  
Novi, Michigan 48377  
TEL: (248) 896-0145  
FAX: (248) 896-0149  
Web Site: <http://www.innov-research.com>

# Certificate of Analysis



Western Blot - 10% SDS-PAGE  
ASMPG-GF-300 at 1:250 Primary  
Goat anti-mouse IgG Alk Phos at 1:3000 Secondary  
1 Mouse Plasminogen (0.5 ug) Non-reduced  
2 Prestained Standard



Western Blot - 10% SDS-PAGE  
ASMPG-GF-300 at 5 ug/ml  
ABC Rabbit IgG Staining Kit (PIERCE 32046)  
1 MPLG-300 (0.5 ug) Non-reduced  
2 MPLG-302B (0.5 ug) Non-reduced  
3 HPLG-304 (0.5 ug) Non-reduced  
4 MPLG-300 (0.5 ug) Reduced  
5 MPLG-302B (0.5 ug) Reduced  
6 HPLG-304 (0.5 ug) Reduced  
7 Prestained Standard

**Product:** Rabbit anti-murine plasminogen/plasmin IgG Fraction

**Date:** 10 March, 2000

**Lot:** ASMPG-GF-300

**Molecular Weight:** ~160,000 by SDS-PAGE

### Physical Specifications:

Physical Appearance: colorless frozen solution

Solubility: > 10 mg/mL

### Spectrophotometric Data:

Ultraviolet: Absorbance (280nm) = 10.5  $\epsilon^{0.1\%} = 1.4$   
Concentration = 7.5 mg/mL

### Considerations:

Storage Conditions: Store frozen at  $-70^{\circ}\text{C}$  – stability > 1yr

Buffer Composition: 0.05 M Sodium Phosphate; 0.1 M NaCl; 1 mM EDTA; pH 6.6

Other: > 98% pure by SDS PAGE

### Applications:

This product has been used successfully in western blots and ELISA based assays.

Titer between  $10^4$  –  $10^5$  for ELISA, 1-5 ug/ml for WB.

Strongest sensitivity under non-reducing conditions.

Shows some cross-reactivity to apolipoprotein and human plasminogen.