

Innovative Research, Inc.

46430 Peary Court

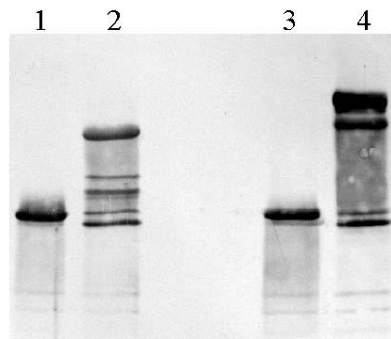
Novi, MI 48377

TEL: (248) 896-0145

FAX: (248) 896-0149

Web Site: <http://www.innov-research.com>

Certificate of Analysis



Western Blot - 10% SDS-PAGE
ASHPAI-GF-BIO-705 at 2 ug/ml Primary
Avidin-AP at 1:3,000 Secondary
1 PAI-A (0.5 ug) Reduced
2 PAI-A (0.5 ug) + uPA (3 ug) Reduced
3 PAI-A (0.5 ug) Non-reduced
4 PAI-A (0.5 ug) + uPA (3 ug) Non-reduced

Product: Biotin Labeled Rabbit Anti-human PAI-1 IgG Fraction – ASHPAI-GF-BIO

Date: 20 July, 2005

Lot: Sample

Molecular Weight: ~160,000 by SDS-PAGE

Physical Specifications:

Physical Appearance: colorless frozen solution

Solubility: > 10 mg/mL

Spectrophotometric Data:

Ultraviolet: Absorbance (280nm) = 8.30 $\epsilon^{0.1\%} = 1.36$
Concentration = 6.1 mg/mL

Considerations:

Polyclonal antibody purified from rabbit antiserum.

Class: IgG

Storage Conditions: Store frozen at -70°C – stability > 1yr

Buffer Composition: 0.05 M Sodium Phosphate; 0.1 M NaCl; 1 mM EDTA; pH 6.6

Biotin Incorporation: 4.5 moles biotin/mole IgG as determined by HABA assay.

Titers:

Use at 1-5 ug/ml for Western Blot.